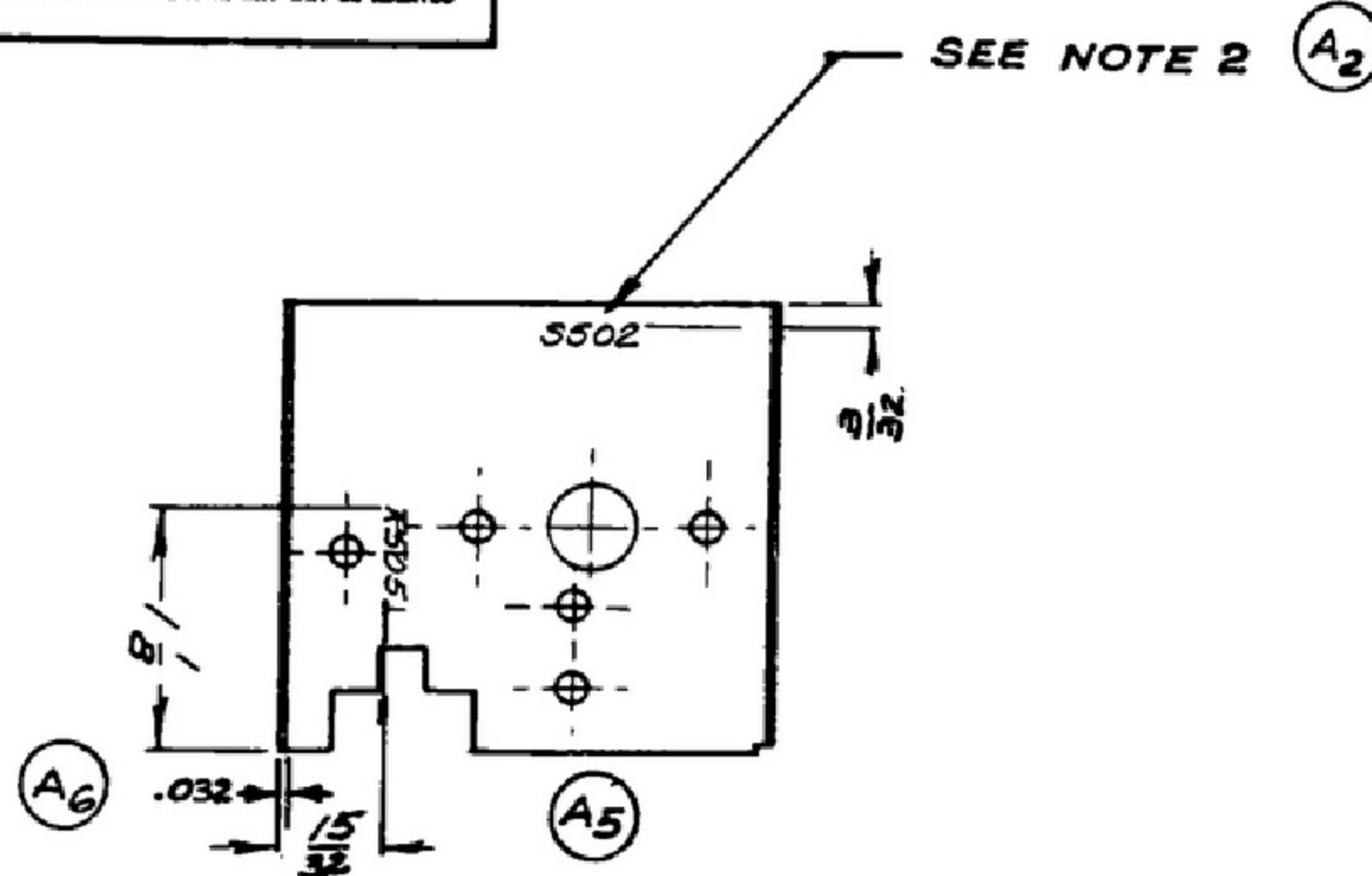


NOTICE: WHEN GOVERNMENT DRAWINGS, SPECIFICATIONS, OR OTHER DATA ARE USED FOR ANY PURPOSE OTHER THAN IN CONNECTION WITH A DEFINITELY RELATED SYSTEM, THE UNITED STATES GOVERNMENT ASSUMES NO LIABILITY FOR ANY OMISSIONS, ERRORS, OR DEFICIENCIES, AND THE FACT THAT THE GOVERNMENT HAS PROVIDED TECHNICAL DATA DOES NOT CONSTITUTE AN ENDORSEMENT OR A WARRANTY, NOR DOES IT REPRESENT AN ENDORSEMENT OF ANY PATENT OR PROPRIETARY DESIGN, NAME, OR MAKE OF ANY PATENTED INVENTION THAT MAY IN ANY WAY BE RELATED THEREIN.

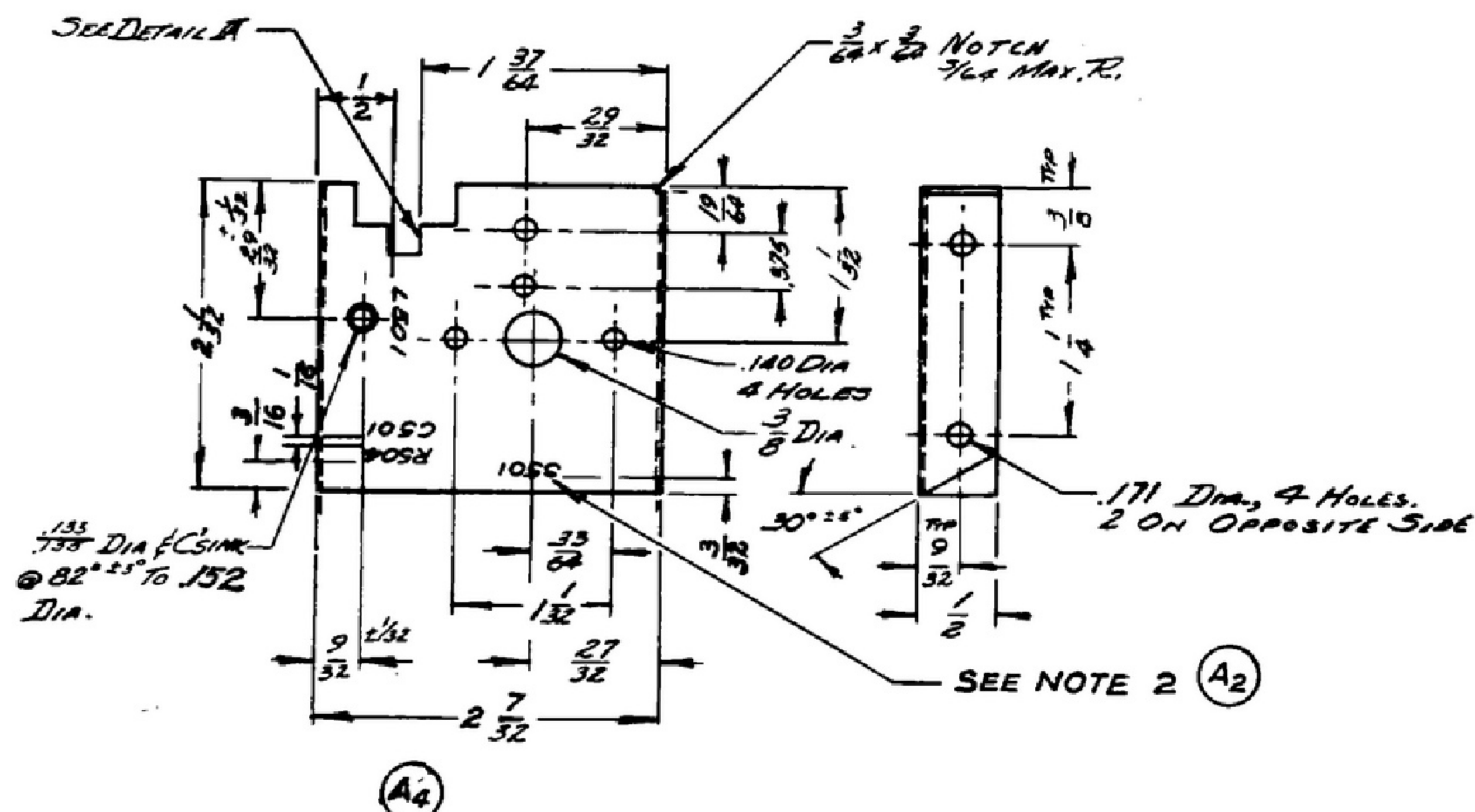
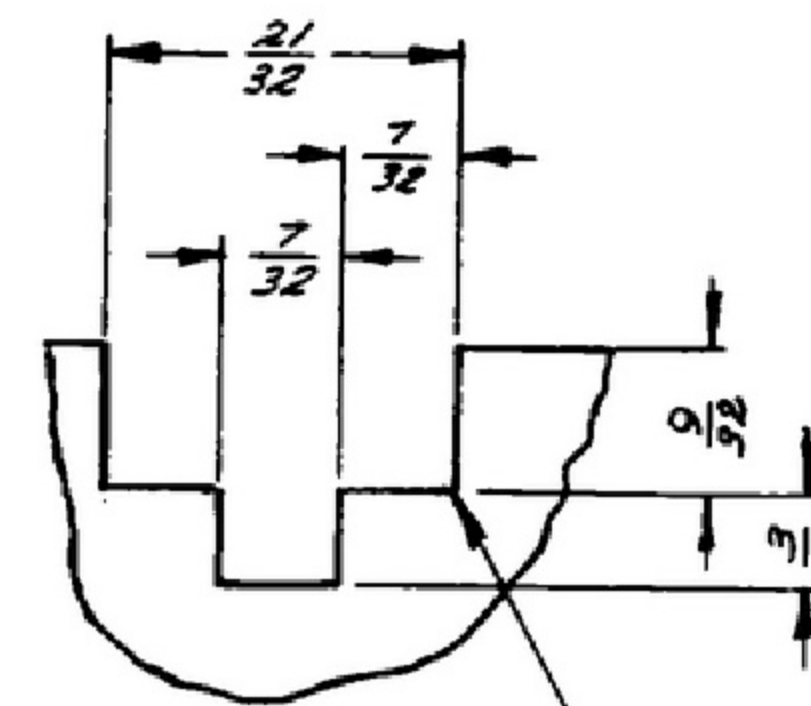
THIS DOCUMENT HAS BEEN PUBLISHED BY THE GOVERNMENT AND MAY BE REPRODUCED AND USED IN CONNECTION WITH ANY GOVERNMENT PROGRAM OR CONTRACT THEREUNDER.

FOR INFORMATION ONLY. CONTRACTOR MAY AT HIS OPTION DEVIATE FROM THESE PROCESS DETAILS.

SWE APPROVAL		REVISIONS			
SYM	PR10042-B	SYM	DESCRIPTION	DATE	APPROVAL
		A ₆	A ₁ -NOTE 2 WAS SILK SCREENING METHOD; A ₂ -WAS A SILK SCREEN DWG CALLOUT. A ₃ -REMOVED COLLINS PROCESS METHOD (NOTE 3). A ₄ -5052 WAS 525; A ₅ -CLARIFY SILK SCREENING; A ₆ -ADDED THK. TO VIEW.	27 OCT. 59	42428-PC-59-A1-51 REV'D PME
B ₁	CA 84682	B ₁	B ₁ -DIMENSION LINE POSITIONING L 501 CORRECTED	23 FEB. 60	42428-PC-59 REV'D. PME



DETAIL B
SCALE 2=1 USED 1 PLACE



ALUMINUM ALLOY 5052 TEMPER H34, PER SPEC QQ-A-318.

FINISH: E513 PER SPEC MIL-F-14072
*COLLINS-588-0036-00

NOTES:

- MAX. INSIDE BEND RADII NOT TO EXCEED 1/16.
- (A₁) ALL CHARACTERS TO BE 3/32 HIGH GOTHIC TYPE PER SPEC. MIL-M-13231 GROUP II, COLOR TO BE BLACK, COLOR CHIP NO. 27038 PER FED STD. 595. MARKINGS TO BE CENTRALLY LOCATED.
- (A₃) ± 1/32 UNLESS OTHERWISE SHOWN, COVER DESIGNATIONS WITH ONE COAT OF VARNISH PER MIL-V-173 TYPE II.

588-0014-002 2 SM-B-248791

588-0013-002 1 REF SM-B-248790 SILK SCREEN SHIELD

COLLINS PART NO.	QTY	REQD	ISSUE NO.	DESCRIPTION	DATE	DATE SPEC
LIST OF MATERIAL						
COLLINS PART NO. 588-0314-003						

DRAWN <i>Hamer</i>			CHECKED <i>Williams</i>		APPROVED	COLLINS RADIO CO. -GEAR RADIUS 10.000-
588-0314-002 + SM-B-248790 SC-PL-248775			UNLESS OTHERWISE SPECIFIED: DECIMAL DIMENSIONS INCLUDING HOLE SIZES MAY VARY ±.005 FRACTIONAL DIMENSIONS INCLUDING HOLE SIZES MAY VARY ±1/64 MACHINED ANGLES MAY VARY ±.1° BREAKED ANGLES MAY VARY ±.50° BROKEN ANGLES MAY VARY ±.1° ECCENTRICITY BETWEEN ANY DIAMETERS ON THE SAME CENTERLINE SHALL NOT EXCEED .010 TOTAL INDICATOR READING. ALL DIMENSIONS ARE FINISH DIMENSIONS INCLUDING APPLIED FINISH AND ARE GIVEN IN INCHES.		1421A-PH-51-93	SIGNAL CORPS
APPLICATION			REVIEWED <i>PME</i>		SHIELD-I.F.	DEPARTMENT OF THE ARMY SIGNAL CORPS ENGINEERING LABORATORIES FORT MONMOUTH NEW JERSEY
			APPROVED <i>HLY</i> <i>PME</i>			
DATE 16 DEC 55			SCALE 1/1		SM-C-248994	